

PART OF SEC. 31-32, T.7N., R.3E., S.L.B. & M.
EVERGREEN PARK SUBDIVISION NO. 1

LOTS 165-172, 200-213, 250-256, 310-314

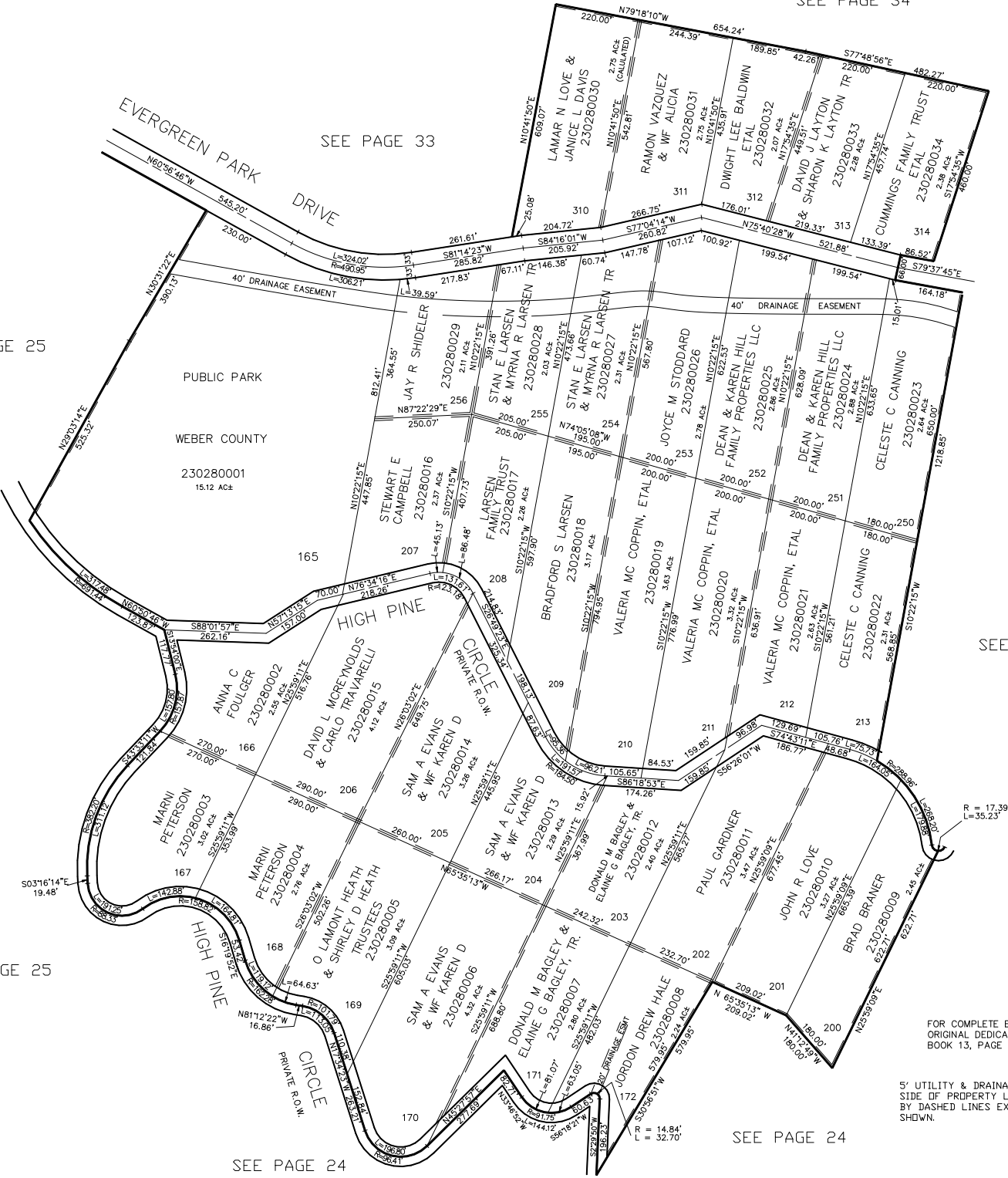
TAXING UNIT: 58

IN WEBER COUNTY

SCALE 1" = 200'

SEE PAGE 34

SEE PAGE 25



SEE PAGE 33

PUBLIC PARK

WEBER COUNTY

230280001
15.12 AC±

SEE PAGE 29

SEE PAGE 25

FOR COMPLETE ENG DATA SEE ORIGINAL DEDICATION PLAT IN BOOK 13, PAGE 58 OF RECORDS.

5' UTILITY & DRAINAGE EASEMENTS EACH SIDE OF PROPERTY LINES AS INDICATED BY DASHED LINES EXCEPT AS OTHERWISE SHOWN.

SEE PAGE 24

SEE PAGE 24